

---

**NATIONAL  
ENDOWMENT  
FOR THE  
HUMANITIES**



**O V E R V I E W**

---

**OF ENDOWMENT  
PROGRAMS  
1997**

# NATIONAL ENDOWMENT FOR THE HUMANITIES

For more information or additional copies of this booklet, contact:

Public Information Office  
National Endowment for the Humanities  
1100 Pennsylvania Avenue, N.W.  
Washington, D.C. 20506  
202/606-8400 or 800/NEH-1121  
e-mail: [info@neh.fed.us](mailto:info@neh.fed.us)

## INTERNET ADDRESSES:

**Division of Preservation and Access**  
[preservation@neh.fed.us](mailto:preservation@neh.fed.us)

**Division of Public Programs**  
[publicpgms@neh.fed.us](mailto:publicpgms@neh.fed.us)

**Division of Research and Education**  
[research@neh.fed.us](mailto:research@neh.fed.us) or  
[education@neh.fed.us](mailto:education@neh.fed.us)

**Challenge Grants**  
[challenge@neh.fed.us](mailto:challenge@neh.fed.us)

**Federal/State Partnership**  
[fedstate@neh.fed.us](mailto:fedstate@neh.fed.us)

**Enterprise Office**  
[enterprise@neh.fed.us](mailto:enterprise@neh.fed.us)

Check the NEH Home Page at  
<http://www.neh.fed.us> for updates on  
program information and deadlines.  
(NEH will not accept grant proposals  
sent through Internet.)  
202/606-8282 TDD  
(for the hearing impaired only)  
Alternative format publications will be  
made available upon request.

O V E R V I E W

Dear Friends,

Through special initiatives, partnerships, and successful grant programs, NEH is continuing to support projects that promise to lead the humanities in teaching, research, and public programming.

A new effort is intended to assure that humanities education will not be left behind in the electronic age. Teaching with Technology is focused on maintaining standards of content in the educational software available for teaching history, literature, and languages—providing multimedia tools that will engage students and go beyond the limits of today's textbooks.

Our ability to support research centers as crucibles where scholars develop new ideas is enhanced this year with a collaboration with the Mellon Foundation. The work of scholars participating in these fellowships is the driving force behind education and public programs in the humanities, and plays a vital role in our national self-understanding.

Public libraries have long held a sacred role in the civic culture of American life—a place where the poorest child could become rich in knowledge and discover the opportunities of life. To help libraries fulfill their missions, NEH offers a special initiative through Challenge Grants intended to assist them in establishing endowments for humanities programming.

These efforts, and other work of the Endowment, we hope will help the humanities endure and flourish in the future of the American people.



Sheldon Hackney  
Chairman of the National Endowment  
for the Humanities

## CONTENTS

### OVERVIEW

The Humanities	1
What the Endowment Supports	2
Whom the Endowment Supports	2
What the Endowment Does Not Support	2
Applying for a Grant	2
How Applications Are Evaluated	3
Federal/State Partnership	3
Enterprise	3

### PROGRAMS

Preservation and Access	6
Public Programs	8
Research and Education Programs	10
Challenge Grants	14

### DEADLINES

1996 Application Deadline Dates	16
Obtaining Applications	17

### GENERAL INFORMATION

NEH Directory	20
The National Council on the Humanities	23
The Jefferson Lecture	24
Charles Frankel Prize	25
State Humanities Councils	26

## THE NATIONAL ENDOWMENT FOR THE HUMANITIES

"Democracy demands wisdom and vision in its citizens"

— National Foundation on the Arts and the Humanities Act of 1965

In order "to promote progress and scholarship in the humanities and the arts in the United States," Congress enacted the National Foundation on the Arts and the Humanities Act of 1965. This act established the National Endowment for the Humanities as an independent grant-making agency of the federal government to support research, education, and public programs in the humanities.

### THE HUMANITIES

The act that established the National Endowment for the Humanities says, "The term 'humanities' includes, but is not limited to, the study of the following: language, both modern and classical; linguistics; literature; history; jurisprudence; philosophy; archaeology; comparative religion; ethics; the history, criticism, and theory of the arts; those aspects of social sciences which have humanistic content and employ humanistic methods; and the study and application of the humanities to the human environment with particular attention to reflecting our diverse heritage, traditions, and history and to the relevance of the humanities to the current conditions of national life."

## WHAT THE ENDOWMENT SUPPORTS

The National Endowment for the Humanities supports exemplary work to advance and disseminate knowledge in all the disciplines of the humanities. Endowment support is intended to complement and assist private and local efforts.

In the most general terms, NEH-supported projects aid scholarship and research in the humanities, help improve humanities education, and foster in the American people a greater curiosity about and understanding of the humanities. More specific information about the types of projects supported may be found in the programs section beginning on page 6.

## WHOM THE ENDOWMENT SUPPORTS

The Endowment welcomes applications from individuals, and nonprofit associations, institutions, and organizations. Except where otherwise specified, individuals eligible for Endowment assistance include U.S. citizens and foreign nationals who have been legal residents in the United States for a period of at least the three years immediately preceding the submission of the application. For additional rules on eligibility, an applicant should refer to the program guidelines.

## WHAT THE ENDOWMENT DOES NOT SUPPORT

The Endowment does not fund projects that:

- are undertaken to satisfy requirements for an academic degree (with the exception of the Faculty Graduate Study Program for Historically Black Colleges and Universities);
- create musical composition, dance, painting, sculpture, poetry, short stories, and novels. Inquiries about federal support for the creative arts should be addressed to the National Endowment for the Arts, Washington, DC 20506, 202/682-5400;
- are directed at persuading an audience to a particular political, philosophical, religious, or ideological point of view.

## APPLYING FOR A GRANT

Those planning to apply for Endowment assistance should write to the appropriate Endowment division or office, briefly describing the proposed project and requesting guidelines and application forms. Current guidelines and descriptive materials are also available at the NEH Public Information Office or on the NEH Home Page.

Applicants are encouraged to consult with NEH staff by phone or letter before submitting a formal proposal. Given enough lead time, staff will try to comment on draft proposals.

## HOW APPLICATIONS ARE EVALUATED

Each Endowment application is assessed first by knowledgeable persons outside the agency who are asked for their judgments about the quality and significance of the proposed project. In fiscal year 1996, about 500 scholars, professionals in the humanities, and other experts served on approximately 100 panels. Panelists represent a diversity of disciplinary, institutional, regional, and cultural backgrounds. In some programs the judgment of panelists is supplemented by reviews from specialists who have extensive knowledge of the specific subject or technical aspects of the application.

The advice of evaluators is assembled by the staff of the Endowment, who comment on matters of fact or on significant issues that would otherwise be missing from the review. These materials are forwarded to the National Council on the Humanities, a board of twenty-six citizens nominated by the President of the United States and confirmed by the Senate. The National Council meets three times a year to advise the Chairman of the Endowment. The Chairman, who is appointed for a four-year term by the President with the consent of the Senate, takes into account the advice provided and, by law, makes the final decision about funding. A final decision can normally be expected about six months after the application deadline.

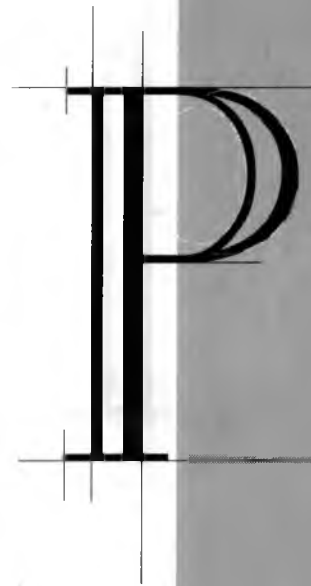
## FEDERAL/STATE PARTNERSHIP

The Federal/State Partnership fosters public understanding of the humanities throughout the nation through state humanities councils in the fifty states, the District of Columbia, Puerto Rico, the U.S. Virgin Islands, the Northern Mariana Islands, American Samoa, and Guam.

Each state council supports programs in the humanities aimed at a broad general audience by designing and conducting its own programs and awarding grants. The council establishes its own grant guidelines and sets its own application deadlines (see the addresses for the state councils on page 26). State humanities councils support a wide variety of projects in the humanities, including reading and discussion programs, lectures, conferences, seminars and institutes for teachers and school administrators, media productions and presentations, and museum and traveling exhibitions.

## ENTERPRISE

The Enterprise office implements Endowment-wide special initiatives, creates partnerships with other federal agencies and private organizations, engages in raising funds for humanities activities, and explores other leadership opportunities for the agency.



# PRESERVATION AND ACCESS



## PRESERVATION AND ACCESS

Grants are made for projects that will create, preserve, and increase the availability of resources important for research, education, and public programming in the humanities.

### PRESERVATION AND ACCESS PROJECTS

Support may be sought to preserve the intellectual content and aid bibliographic control of collections; to compile bibliographies, descriptive catalogs, and guides to cultural holdings; to create dictionaries, encyclopedias, databases, and other types of research tools and reference works; and to stabilize material culture collections through the appropriate housing and storing of objects, improved environmental control, and the installation of security, lighting, and fire-prevention systems. Applications may also be submitted for national and regional education and training projects, regional preservation field service programs, and research and demonstration projects that are intended to enhance institutional practice and the use of technology for preservation and access.

Collections that are the focus of preservation and access projects may encompass books, journals, newspapers, manuscript and archival materials, maps, still and moving images, sound recordings, and objects of material culture held by libraries, archives, museums, historical organizations, and other repositories. Proposals may combine preservation and access activities within a single project. Historically black colleges and universities with significant institutional collections of primary materials are encouraged to apply.

**Eligible applicants:** Individuals, nonprofit institutions and cultural organizations, state agencies, and institutional consortia.

**Application deadline:** July 1, 1997  
202/606-8570  
e-mail: [preservation@neh.fed.us](mailto:preservation@neh.fed.us)



## PUBLIC PROGRAMS

This division fosters public understanding and appreciation of the humanities by supporting projects that bring significant insights of these disciplines to general audiences of all ages through, for example, interpretive exhibitions, radio and television programs, lectures, symposia, multimedia projects, printed materials, and reading and discussion groups.

### PUBLIC PROGRAMS

Grants support the planning, scripting, and production of television and radio programs in the humanities intended for general audiences; the planning and implementation of exhibitions, the interpretation of historic sites, and the production of related publications, multimedia components, and educational programs; the planning and implementation of projects through the use of books, new technologies, and other resources in the collections of libraries and archives in formats such as reading and discussion programs, lectures, symposia, and interpretive exhibitions; and the planning and implementation of other regional and national programs that offer lifelong learning opportunities for the American public.

**Eligible applicants:** Nonprofit institutions and organizations including public television and radio stations and state humanities councils.

**Application deadline:** December 6, 1997  
202/606-8267  
e-mail: [publicpgms@neh.fed.us](mailto:publicpgms@neh.fed.us)



R E S E A R C H   A N D   E D U C A T I O N



## RESEARCH AND EDUCATION

Through grants to educational institutions, fellowships to scholars and teachers, and through the support of significant research this division is designed to strengthen sustained, thoughtful study of the humanities at all levels of education and promote original research in the humanities.

### FELLOWSHIPS AND STIPENDS

Grants provide support for scholars to undertake full-time independent research and writing in the humanities. Grants are available for a maximum of one year and a minimum of six-weeks of summer study.

**Eligible applicants:** Individuals

**Application deadlines:** Fellowships—May 1, 1997  
for university teachers:  
202/606-8466  
e-mail: fellowsuniv@neh.fed.us

for college teachers and independent scholars:  
202/606-8467  
e-mail: fellowscolind@neh.fed.us

Summer Stipends—October 1, 1997  
202/606-8551  
e-mail: stipends@neh.fed.us

Grants also provide support for Historically Black College and University faculty to undertake one year of full-time study leading to a doctoral degree in the humanities with preference given to those individuals who are at the dissertation stage of their work.

**Application deadline:** March 15, 1997  
202/606-8467  
e-mail: fellowscolind@neh.fed.us

### EDUCATION DEVELOPMENT AND DEMONSTRATION (INCLUDES TEACHING WITH TECHNOLOGY)

Grants, including "next semester" Humanities Focus Grants, support curriculum and materials development efforts; faculty study programs within and among educational institutions; and dissemination of significant developments in humanities education.

The Endowment is interested in projects that help teachers use the new electronic technologies to enhance students' understanding of humanities subjects. Applications submitted in response to the Teaching with Technology initiative are encouraged at all three deadlines listed below.

**Eligible applicants:** Public and private elementary and secondary schools, school systems, colleges and universities, nonprofit academic associations, and cultural institutions, such as libraries and museums.

**Application deadlines:** Education Development and Demonstration—October 1, 1997  
Humanities Focus Grants—April 18, 1997; September 15, 1997  
202/606-8380  
e-mail: education@neh.fed.us

### COLLABORATIVE AND INSTITUTION BASED RESEARCH

Grants provide up to three years of support for collaborative research in the preparation for publication of editions, translations, and other important works in the humanities, and in the conduct of large or complex interpretive studies including archaeology projects and the humanities studies of science and technology. Grants also support fellowships offered through independent research institutions. A list of funded fellowship programs is available from the division or the NEH web site.

**Eligible applicants:** Individuals, institutions of higher education, nonprofit professional associations, scholarly societies, and other nonprofit organizations.

**Application deadlines:** Collaborative Research—September 2, 1997  
Fellowship Programs at  
Independent Research Institutions—October 1, 1997  
202/606-8210  
e-mail: research@neh.fed.us



## SEMINARS AND INSTITUTES

Grants support national summer seminars and institutes in the humanities for college and school teachers. These faculty development activities are conducted at colleges and universities across the country. Applications submitted in response to the Teaching with Technology initiative are encouraged. Those wishing to participate in seminars submit their seminar applications to the seminar director. Lists of upcoming seminars and institutes are available from the program or the NEH web site.

**Eligible applicants:** Individuals, and institutions of higher learning.

**Application deadline:** Participants—March 1, 1997 for summer 1997  
Directors—March 1, 1997 for summer 1998  
202/606-8463  
e-mail: [education@neh.fed.us](mailto:education@neh.fed.us)

## INDEPENDENT STUDY IN THE HUMANITIES

The Endowment has awarded a grant to the Council for Basic Education to support a program of summer fellowships for elementary and secondary school teachers with at least five years of teaching experience. School principals and librarians also may be eligible to apply. Fellowships of \$3,000 support six weeks of independent study in one of the disciplines of the humanities.

For information, call or write to:  
Independent Study in the Humanities, P.O.Box 135,  
Ashton, MD 20861, 202/347-4171.



C H A L L E N G E G R A N T S

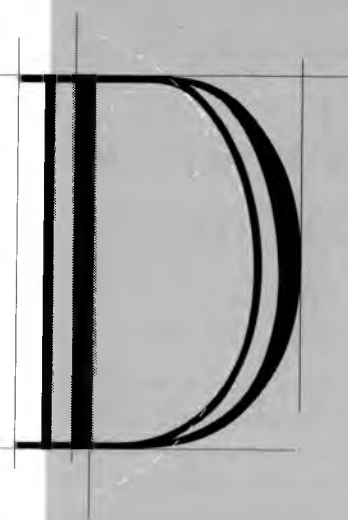
## CHALLENGE GRANTS

Nonprofit institutions interested in developing new sources of long-term support for educational, scholarly, preservation, and public programs in the humanities may be assisted in these efforts by an NEH Challenge Grant. Grantees are required to raise three or four dollars in new or increased donations for every federal dollar offered. Both federal and nonfederal funds may be used to establish or increase institutional endowments and thus guarantee long-term support for a variety of humanities needs. Funds may also be used for limited direct capital expenditures, where such needs are compelling and clearly related to improvements in the humanities.

**Eligible applicants:** Nonprofit postsecondary, educational, research, or cultural institutions and organizations working within the humanities.

A special initiative to assist public libraries in creating endowments to support humanities programming is available to libraries that have not previously held an NEH Challenge Grant. Awards made through this initiative have a maximum of \$150,000 in federal dollars, and the recipient is required to raise two times the amount of federal funds offered. Applications will be accepted at the regular Challenge Grants deadline.

**Application deadline:** May 1, 1997  
202/606-8309  
e-mail: [challenge@neh.fed.us](mailto:challenge@neh.fed.us)



D E A D L I N E S



## SCHEDULE OF APPLICATION DEADLINES

Program	Application Deadline	Award Notification
Preservation and Access	July 1, 1997	May 1998
Public Programs	December 6, 1997	September 1998
Fellowships	May 1, 1997	January 1998
Summer Stipends	October 1, 1997	May 1998
Faculty Graduate Study Program for Historically Black Colleges and Universities	March 15, 1997	September 1997
Education Development and Demonstration	October 1, 1997	May 1998
Humanities Focus Grants	April 18, 1997 September 15, 1997	September 1997 January 1998
Collaborative Research	September 2, 1997	May 1998
Fellowship Programs at Independent Research Institutions	October 1, 1997	September 1998
Seminars and Institutes		
Participants (summer 1997):	March 1, 1997	April 1997
Directors (summer 1998):	March 1, 1997	September 1997
Challenge Grants	May 1, 1997	January 1998

### FEDERAL/STATE PARTNERSHIP

Each state council establishes its own grant guidelines and application deadlines. Write or call for further information. (See addresses on page 26.)

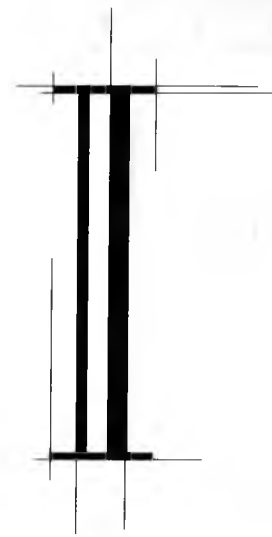
### TO OBTAIN APPLICATIONS

Guidelines and application forms are available from the program or the Public Information Office, National Endowment for the Humanities, 1100 Pennsylvania Avenue, N.W., Washington, D.C. 20506, telephone 202/606-8400 or 800/NEH-1121, e-mail [info@neh.fed.us](mailto:info@neh.fed.us), or from the NEH Home Page at <http://www.neh.fed.us>. For the hearing impaired, the TDD number is 202/606-8282.

The Public Information Office does not maintain a general mailing list. Instead, the Endowment responds to specific requests for publications. For faster service, please enclose a self-addressed mailing label when requesting information.

### EQUAL EMPLOYMENT OPPORTUNITY

By accepting an award a grantee has agreed not to discriminate on the basis of race, color, national origin, sex, disability, or age. For further information, write to the Equal Employment Opportunity Officer, National Endowment for the Humanities, 1100 Pennsylvania Avenue, N.W., Washington, D.C. 20506.



I N F O R M A T I O N



## NEH DIRECTORY

### ENDOWMENT DIVISIONS AND OFFICES (AREA CODE 202)

Preservation and Access	606-8570 FAX:606-8639 e-mail: preservation@neh.fed.us
Public Programs	606-8267 FAX:606-8557 e-mail: publicpgms@neh.fed.us
Research and Education	606-8200 FAX:606-8204 e-mail: research@neh.fed.us or education@neh.fed.us
Challenge Grants	606-8309 FAX:606-8579 e-mail: challenge@neh.fed.us
Office of the Chairman	606-8310 e-mail: chairman@neh.fed.us
Federal/State Partnership	606-8254 FAX:606-8365 e-mail: fedstate@neh.fed.us
Enterprise	606-8328 e-mail: enterprise@neh.fed.us
Office of the General Counsel	606-8322 e-mail: gencoun@neh.fed.us
Public Information Office	606-8400 e-mail: info@neh.fed.us
Office of the Inspector General	606-8350 e-mail: oig@neh.fed.us
Human Resources	606-8415 e-mail: personnel@neh.fed.us
Telecommunications Device for Deaf and Hearing Impaired People (TDD)	606-8282

## NEH CHAIRMAN'S STAFF

Sheldon Hackney  
Chairman

Juan E. Mestas  
Deputy Chairman

Michael S. Shapiro  
General Counsel

Stephen Cherrington  
Director of Planning and Budget

Ann S. Young Orr  
Director of Enterprise and  
Congressional Liaison

Gary Krull  
Director of Communications Policy

Edith Manza  
Director of Federal/State Partnership

Marna Madsen  
Special Assistant to the Chairman  
for White House and Federal Relations

Carole Watson  
Special Adviser to the Chairman

## NEH DIVISION AND OFFICE DIRECTORS

George F. Farr, Jr.  
Division of Preservation and Access

Nancy Rogers  
Division of Public Programs

James Herbert  
Division of Research and Education

Stephen M. Ross  
Office of Challenge Grants

David J. Wallace  
Grants Office

Mila Padua (acting)  
Accounting

Barry Maynes  
Office of Administrative Services

Timothy Connelly  
Office of Human Resources

Jill Heagy (acting)  
Office of Information Resources  
Management

Sheldon Bernstein  
Office of the Inspector General

## THE NATIONAL COUNCIL ON THE HUMANITIES

Chairman  
Sheldon Hackney

Vice Chairman  
Jon N. Moline  
Seguin, Texas

Bruce Benson  
Denver, Colorado  
Paul A. Cantor  
Charlottesville, Virginia

Bruce Cole  
Bloomington, Indiana  
Helen Gray Crawford  
New Orleans, Louisiana

John H. D'Arms  
Ann Arbor, Michigan  
Margaret P. Duckett  
Philadelphia, Pennsylvania

David Finn  
New York, New York

Darryl J. Gless  
Chapel Hill, North Carolina

Ramón A. Gutiérrez  
San Diego, California

Joseph H. Hagan  
Worcester, Massachusetts

Theodore Hamerow  
Madison, Wisconsin

Mikiso Hane  
Galesburg, Illinois

Charles Patrick Henry  
Berkeley, California

Henry H. Higuera  
Annapolis, Maryland

Doris B. Holleb  
Chicago, Illinois

Thomas C. Holt  
Chicago, Illinois

Martha C. Howell  
New York, New York

Alicia Juarrero  
Washington, D.C.

Nicolas Kanellos  
Houston, Texas

Alan Kors  
Wallingford, Pennsylvania

Bev Lindsey  
Little Rock, Arkansas

Robert I. Rotberg  
Cambridge, Massachusetts

John Searle  
Berkeley, California

Harold K. Skramstad, Jr.  
Las Cruces, New Mexico

## THE JEFFERSON LECTURE

The Jefferson Lecture in the Humanities, established by the Endowment in 1972, is the highest honor the federal government bestows for distinguished intellectual achievement in the humanities. The lecture, traditionally delivered each spring, provides the opportunity for an outstanding thinker to present in a public forum matters of broad concern in the humanities. The lecturer is chosen each year by the National Council on the Humanities.

The twenty-fifth Annual Jefferson Lecturer was Toni Morrison. Former lecturers were Lionel Trilling, Erik Erikson, Robert Penn Warren, Paul Freund, John Hope Franklin, Saul Bellow, C. Vann Woodward, Edward Shils, Barbara Tuchman, Gerald Holton, Emily Townsend Vermeule, Jaroslav Pelikan, Sidney Hook, Cleanth Brooks, Leszek Kolakowski, Forrest McDonald, Robert Nisbet, Walker Percy, Bernard Lewis, Gertrude Himmelfarb, Bernard Knox, Robert Conquest, Gwendolyn Brooks, and Vincent Scully.

## THE CHARLES FRANKEL PRIZE

The Charles Frankel Prize, established in 1988, annually recognizes up to five individuals who have made outstanding contributions to the public's understanding of the texts, themes, and ideas of the humanities. Charles Frankel (1917-79) was a teacher, statesman, and author known for his commitment to scholarship and public affairs.

The 1996 prize winners were Rita Dove, Doris Kearns Goodwin, Daniel Kemmis, Arturo Madrid, and Bill Moyers.

I N F O R M A T I O N

## STATE HUMANITIES COUNCILS

### ALABAMA

Alabama Humanities Foundation  
2217 Tenth Court South  
Birmingham, AL 35205  
205/930-0540  
e-mail: bptr45b@prodigy.com

### ALASKA

Alaska Humanities Forum  
421 West First Avenue, Suite #210  
Anchorage, AK 99501  
907/272-5341  
e-mail: forum@alaska.net

### AMERICAN SAMOA

Amerika Samoa Humanities Council  
P.O. Box 5800  
Pago Pago, AS 96799  
684/633-4870/71

### ARIZONA

Arizona Humanities Council  
The Ellis-Shackelford House  
1242 North Central Avenue  
Phoenix, AZ 85004  
602/257-0335  
e-mail: ahcdan@asuvm.inre.asu.edu

### ARKANSAS

Arkansas Humanities Council  
10816 Executive Center Drive  
Suite 310  
Little Rock, AR 72211-4383  
501/221-0091

### CALIFORNIA

California Council for the Humanities  
312 Sutter Street, Suite 601  
San Francisco, CA 94108  
415/391-1474  
e-mail: cch@netcom.com

### COLORADO

Colorado Endowment for the Humanities  
1623 Blake Street #200  
Denver, CO 80202  
303/573-7733  
e-mail: mcoval@qadas.com

### CONNECTICUT

Connecticut Humanities Council  
955 South Main Street, Suite E  
Middletown, CT 06457  
203/685-2260

### DELAWARE

Delaware Humanities Forum  
1812 Newport Gap Pike  
Wilmington, DE 19808-6179  
302/633-2400  
e-mail: hhofmann@strauss.udel.edu

### DISTRICT OF COLUMBIA

Humanities Council of Washington, D.C.  
1331 H Street, NW  
Suite 902  
Washington, DC 20005  
202/347-1732  
e-mail: hcwdc@the-hermes.net

I N F O R M A T I O N

### FLORIDA

Florida Humanities Council  
1514 1/2 East 8th Avenue  
Tampa, FL 33605-3708  
813/272-3473  
e-mail: FHC@acompsf.usf.edu

### GEORGIA

Georgia Humanities Council  
50 Hurt Plaza, SE, Suite 440  
Atlanta, GA 30303-2915  
404/523-6220  
e-mail: ghc@emory.edu

### GUAM

Guam Humanities Council  
272 West Route 8, Suite 2A  
Barrigada, Guam 96913  
671/734-1713  
e-mail: ghc@kuentos.guam.net

### HAWAII

Hawaii Committee for the Humanities  
First Hawaiian Bank Building  
3599 Waialae Avenue, Room 23  
Honolulu, HI 96816  
808/732-5402  
e-mail: hch@aloha.net

### IDAHO

Idaho Humanities Council  
217 West State Street  
Boise, ID 83702  
208/345-5346

### ILLINOIS

Illinois Humanities Council  
203 N. Wabash Avenue, Suite 2020  
Chicago, IL 60601-2417  
312/422-5580

### INDIANA

Indiana Humanities Council  
1500 North Delaware Street  
Indianapolis, IN 46202  
317/638-1500  
e-mail: ihc@iupiu.edu

### IOWA

Iowa Humanities Board  
Oakdale Campus Northlawn  
University of Iowa  
Iowa City, IA 52242  
319/335-4153  
e-mail: mrrubin@blue.weeg.uiowa.edu

### KANSAS

Kansas Humanities Council  
112 SW Sixth Avenue, Suite 210  
Topeka, KS 66603  
913/357-0359  
e-mail: kshumcoun@aol.com

### KENTUCKY

Kentucky Humanities Council  
206 East Maxwell Street  
Lexington, KY 40508  
606/257-5932  
e-mail: vgsmit00@ukcc.uky.edu

### LOUISIANA

Louisiana Endowment for the Humanities  
1001 Howard Avenue, Suite 3110  
New Orleans, LA 70113  
504/523-4352  
e-mail: leh@communique.net

### MAINE

Maine Humanities Council  
371 Cumberland Avenue  
P.O. Box 7202  
Portland, ME 04112  
207/773-5051  
e-mail: mehucooun@saturn.caps.maine.edu

### MARYLAND

Maryland Humanities Council  
601 North Howard Street  
Baltimore, MD 21201  
410/625-4830  
e-mail: mhcall@aol.com



**MASSACHUSETTS**

Massachusetts Foundation for  
the Humanities  
One Woodbridge Street  
South Hadley, MA 01075  
413/536-1385  
e-mail: d.tebaldi@umassp.edu

**MICHIGAN**

Michigan Humanities Council  
119 Pere Marquette Drive  
Suite 3B  
Lansing, MI 48912-1231  
517/372-7770  
e-mail: mihum@voyager.net

**MINNESOTA**

Minnesota Humanities Commission  
987 East Ivy Avenue  
St. Paul, MN 55106-2046  
612/774-0105  
e-mail: mnhum@gold.tc.umn.edu

**MISSISSIPPI**

Mississippi Humanities Council  
3825 Ridgewood Road, Room 311  
Jackson, MS 39211  
601/982-6752  
e-mail: barbara@mhc.state.ms.us

**MISSOURI**

Missouri Humanities Council  
911 Washington Avenue  
Suite 215  
St. Louis, MO 63101-1208  
314/621-7705  
e-mail: mohuman@home.stlnet.com

**MONTANA**

Montana Committee for the Humanities  
P.O. Box 8036  
Hellgate Station  
Missoula, MT 59807  
406/243-6022  
e-mail: lastbest@selway.umn.edu

**NEBRASKA**

Nebraska Humanities Council  
Suite 225 Lincoln Center Building  
215 Centennial Mall South  
Lincoln, NE 68508  
402/474-2131  
e-mail: mfisher@unlinfo.unl.edu or  
whitaker@unlinfo.unl.edu

**NEVADA**

Nevada Humanities Committee  
P.O. Box 8029  
Reno, NV 89507  
702/784-6587  
e-mail: winzeler@scs.unr.edu

**NEW HAMPSHIRE**

New Hampshire Humanities Council  
19 Pillsbury Street  
P.O. Box 2228  
Concord, NH 03302-2228  
603/224-4071

**NEW JERSEY**

New Jersey Council for the Humanities  
28 West State Street, 6th floor  
Trenton, NJ 08608  
609/695-4929  
e-mail: njch@aol.com

**NEW MEXICO**

New Mexico Endowment for the Humanities  
Corner of Campus and Girard NE  
Onate Hall, Room 209  
University of New Mexico  
Albuquerque, NM 87131  
505/277-3705  
e-mail: nmeh@unm.edu

**NEW YORK**

New York Council for the Humanities  
198 Broadway, 10th Floor  
New York, NY 10038  
212/233-1131  
e-mail: hum@echonyc.com

**NORTH CAROLINA**

North Carolina Humanities Council  
425 Spring Garden Street  
Greensboro, NC 27401  
919/334-5325  
e-mail: leigh@iris.uncg.edu

**NORTH DAKOTA**

North Dakota Humanities Council  
2900 Broadway East, Suite 3  
P.O. Box 2191  
Bismarck, ND 58502  
701/255-3360  
e-mail: ealbers@cerfnet.com

**COMMONWEALTH OF THE NORTHERN  
MARIANA ISLANDS**

Council for the Humanities  
AAA-3394, Box 10001  
Saipan, MP 96950  
670/235-4785  
e-mail: ron.barrineau@saipan.com

**OHIO**

The Ohio Humanities Council  
695 Bryden Road  
P.O. Box 06354  
Columbus, OH 43206-0354  
614/461-7802  
e-mail: ohiohum@aol.com

**OKLAHOMA**

Oklahoma Foundation for the Humanities  
Festival Plaza  
428 West California, Suite 270  
Oklahoma City, OK 73102  
405/235-0280  
e-mail: ofhuser1@mailhost.onenet.net

**OREGON**

Oregon Council for the Humanities  
812 SW Washington Street, Suite 225  
Portland, OR 97205  
503/241-0543  
e-mail: och@teleport.com

**PENNSYLVANIA**

Pennsylvania Humanities Council  
320 Walnut Street, Suite 305  
Philadelphia, PA 19106  
215/925-1005  
e-mail: phc@libertynet.org

**PUERTO RICO**

Fundacion Puertorriqueña de las  
Humanidades  
109 San Jose Street, 3rd floor  
Corner of Luna Street  
Box S-4307  
Old San Juan, PR 00901  
809/721-2087

**RHODE ISLAND**

Rhode Island Committee for the Humanities  
60 Ship Street  
Providence, RI 02903  
401/273-2250  
e-mail: ri\_ch@ids.net

**SOUTH CAROLINA**

South Carolina Humanities Council  
1308 Columbia College Drive  
P.O. Box 5287  
Columbia, SC 29250  
803/691-4100  
e-mail: fb@scsn.net

**SOUTH DAKOTA**

South Dakota Humanities Council  
Box 7050, University Station  
Brookings, SD 57007  
605/688-6113  
e-mail: sdhc@sdsunus.sdstate.edu

**TENNESSEE**

Tennessee Humanities Council  
1003 18th Avenue South  
Nashville, TN 37212  
615/320-7001  
e-mail: richeatham@gnn.com

**TEXAS**

Texas Council for the Humanities  
Banister Place A  
3809 South Second Street  
Austin, TX 78704  
512/440-1991  
e-mail: tchwings@aol.com

**UTAH**

Utah Humanities Council  
350 South 400 East  
Suite 110  
Salt Lake City, UT 84111  
801/359-9670  
e-mail: delmont.oswald@mc.cc.utah.edu

**VERMONT**

The Vermont Council on the Humanities  
17 Park Street, RR1, Box 7285  
Morrisville, VT 05661  
802/888-3183  
e-mail: 73531.716@compuserve.com

**VIRGINIA**

Virginia Foundation for the Humanities  
145 Ednam Drive  
Charlottesville, VA 22903-4629  
804/924-3296  
e-mail: rcv@virginia.edu

**VIRGIN ISLANDS**

Virgin Islands Humanities Council  
5-6 Kongens Gade, Corbiere Complex  
Suite 200B-201B  
St. Thomas, VI 00802  
809/776-4044

**WASHINGTON**

Washington Commission for the Humanities  
615 Second Avenue, Suite 300  
Seattle, WA 98104  
206/682-1770  
e-mail: wch@humanities.org

**WEST VIRGINIA**

West Virginia Humanities Council  
723 Kanawha Blvd., East Suite 800  
Charleston, WV 25301  
304/346-8500  
e-mail: wvhuman@aol.com

**WISCONSIN**

Wisconsin Humanities Council  
802 Regent Street  
Madison, WI 53715  
608/262-0706  
e-mail: pwallace@facstaff.wisc.edu

**WYOMING**

Wyoming Council for the Humanities  
P.O. Box 3643-University Station  
Laramie, WY 82071-3142  
307/766-6496  
e-mail: hummer@uwyo.edu

**HUMANITIES MAGAZINE**

Featured in every issue of *Humanities*

- articles by nationally known scholars and writers
- information about noteworthy Endowment-supported projects
- a calendar of application deadlines with the names and telephone numbers of key programs staff
- a roundup of humanities activities around the country.

*Humanities* is sold by subscription at \$16 (\$20 foreign) for six issues a year, or \$32 (\$40 foreign) for two years. To subscribe, fill out this form and send it to

**New Orders**

Superintendent of Documents  
P.O. Box 371954  
Pittsburgh, PA 15250-7954  
Fax 202/512-2233

**P97-1**

Please enter my subscription  
to *Humanities* for:

- ☐ one year, six issues, at \$16 domestic, \$20 foreign.  
☐ two years, 12 issues, at \$32 domestic, \$40 foreign.

☐ Check enclosed for \$ \_\_\_\_\_ Money order enclosed for \$ \_\_\_\_\_  
(Make checks and money order payable to *Superintendent of Documents*)

☐ Charge to my Deposit Account No.           — ☐ Order No. \_\_\_\_\_

☐ Charge to my VISA ☐ Charge to my MasterCard Expiration Date: month/year

Credit Card No.

(Please print or type)

\_\_\_\_\_  
Name (First, Last)

\_\_\_\_\_  
Title/Institution

\_\_\_\_\_  
Address

\_\_\_\_\_  
City

\_\_\_\_\_  
State

\_\_\_\_\_  
Zip Code

\_\_\_\_\_  
Daytime Phone

\_\_\_\_\_  
Signature (if paying by credit card)

NATIONAL ENDOWMENT FOR THE

# HUMANITIES

WASHINGTON D.C. 20506

OFFICIAL BUSINESS

PENALTY FOR PRIVATE USE, \$300

